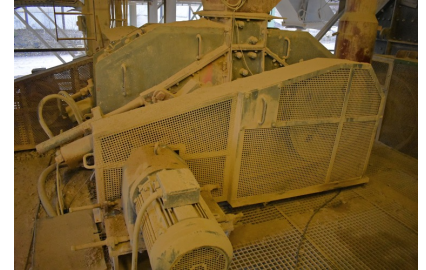


FAM Roller Mill 1004 H



TECHNICAL SPECIFICATION

Manufacturer: FAM
Description: Roller Mill
Type: 1004 H
Year of construction: 1996
Machine size: 1004
Roller diameter: 1.000 mm
Roller width: 400 mm
Roller rotation speed: $n = 122$ 1/min
Roller circumferential speed: $v = 6,4$ m/s
Machine V-belt pulley: $\varnothing 800$ mm
Drive V-belt pulley: $\varnothing 400$ mm
Drive power: 2 x 22 kW, 233 1/min, 400V
Drive Type: SEW R 102 DV 180 L4 TF
Total weight: 8,9 t

Materials

Roller shell: G-X 110 MnCr 18.2
Wear plates: Hardox 400; 20 mm
Material guiding: Hardox 400; 15 mm

SPECIFIC COMMENT

- Inclusive hydraulic unit and control unit
- Duration of use to date approx. 5 years

If you are interested, we would be happy to send you a detailed offer with photo documentation.

Yours sincerely,

EuroConsult Dimitrios Piretzidis